



STUDY ABROAD | FRANCE 2023

OUR MEETING WILL COVER:



WHY TRAVEL
IS
IMPORTANT



OUR
TOUR



OUR
NEW
TRAVEL
PARTNER



THE SAFETY
APPROACH



WHAT'S
INCLUDED
WHAT'S NOT



HOW TO
RESERVE
YOUR SPOT

5 COURSE ELEMENTS

1. Pre-travel sessions –MANDATORY

- Trip logistics
- Travel tips
- Foreign customs & etiquette
- Cultural overview

2. Project & reflection

3. Class work abroad

4. Travel

5. Project Submission in Canvas



[4522 Study Abroad: France \(Summer of 2024\)](#)

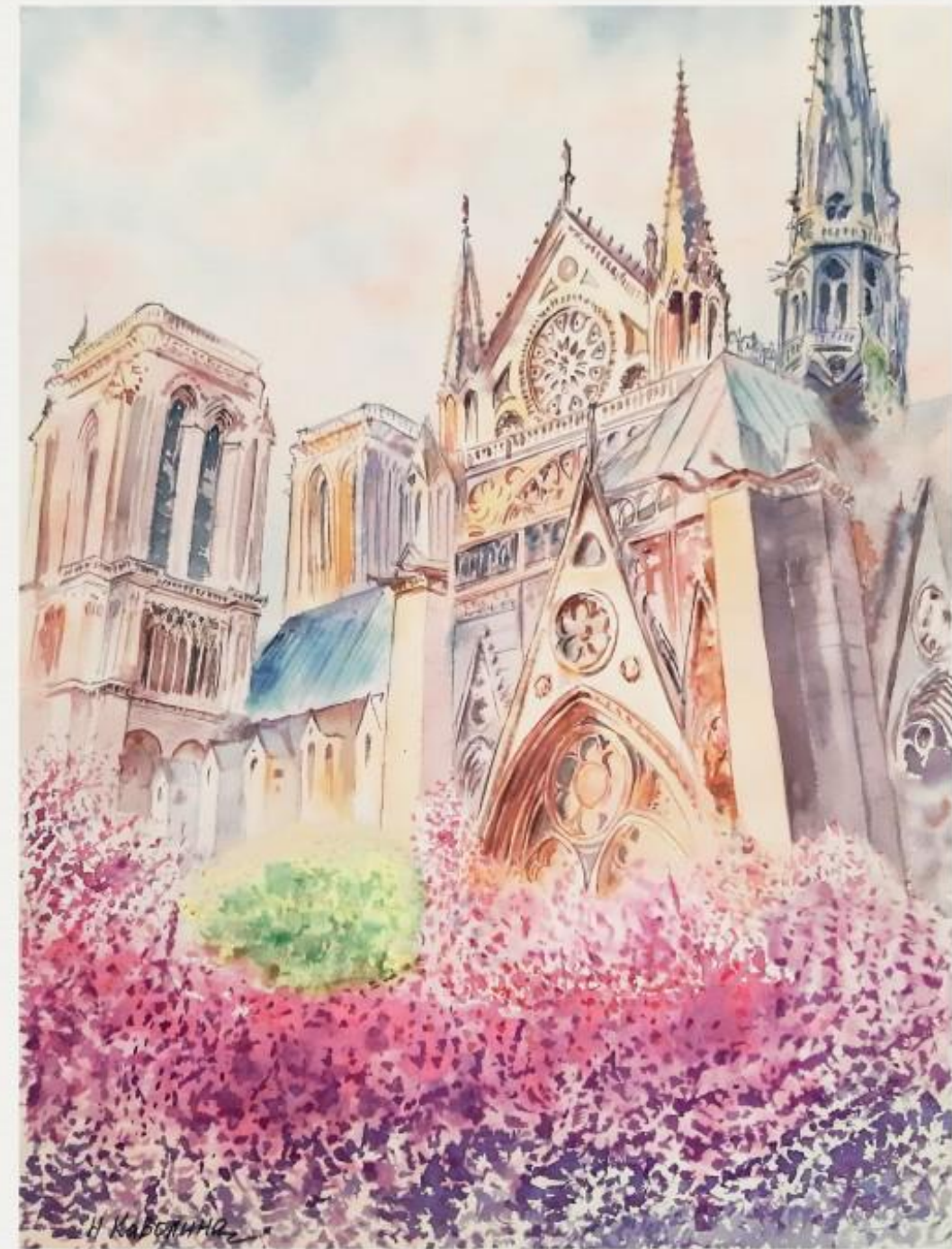
[4521 Study Abroad: Spain \(Summer of 2023\)](#)

(.25 elective credit)

Study Abroad courses are designed to provide the student with an immersion experience and the opportunity to use a world language in an authentic culture where the target language is spoken. Participants will experience the art, music, history and customs of the country as well as carry out tasks to improve their oral proficiency. Each study abroad course contains five elements; pre-travel sessions (attendance at these sessions is mandatory for students), project, classwork abroad, travel, and reflection.

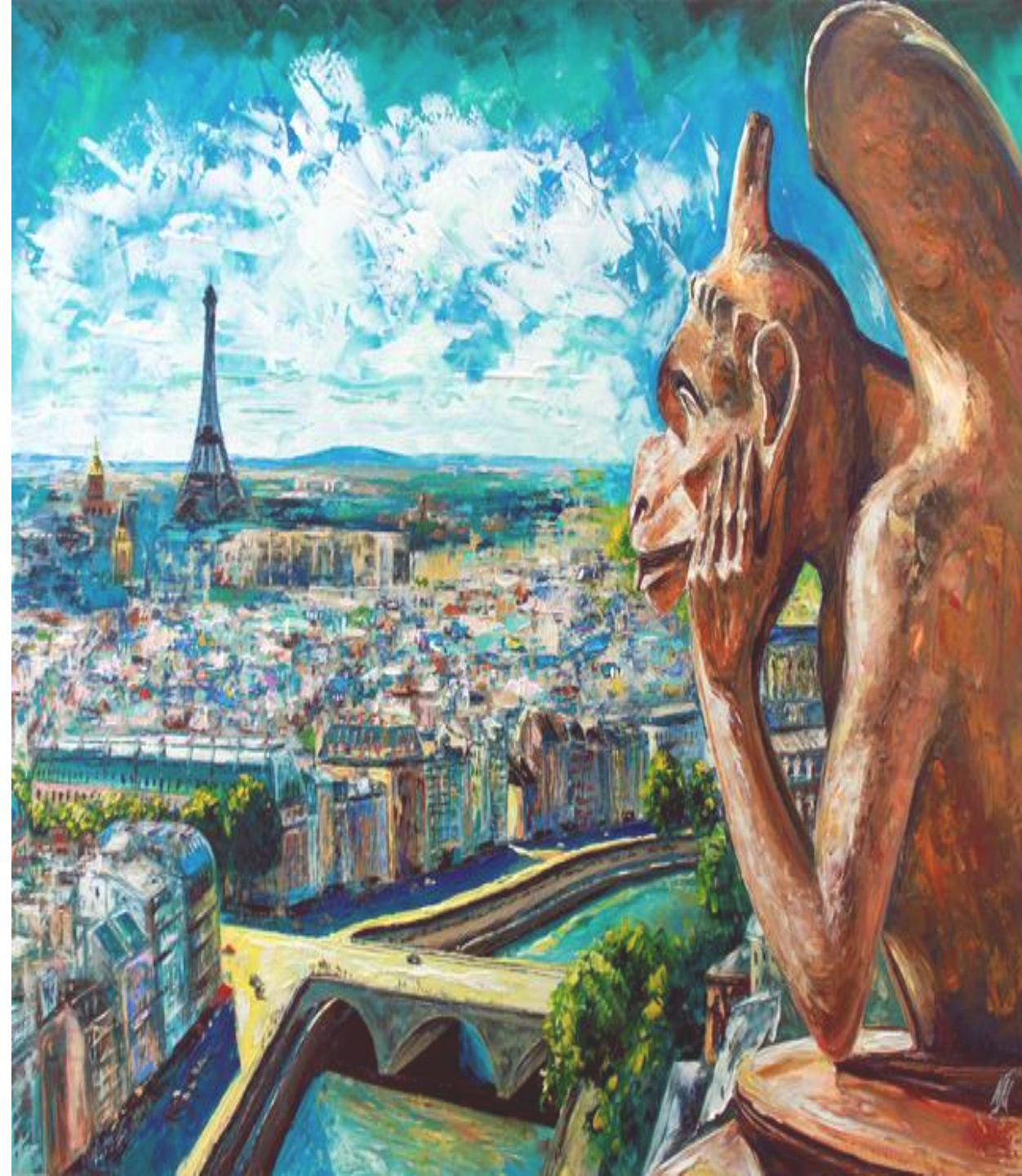
While abroad, students must adhere to all school board policies, including those regarding drugs, alcohol, and weapons. Students will comply with requirements regarding masking, vaccinations and/or evidence of negative covid tests as required by the host country. An application form is available in each school through the World Languages Department teachers in May. The cost of the course will vary from year to year and is the sole financial responsibility of parents or guardians.

Enrollment is limited. Travel for these courses will occur in the summer, rotating between languages if possible. Travel is dependent upon world conditions, travel alerts, student enrollment and chaperone availability. **Prerequisites: Teacher recommendations, essay, application. Students must have completed Spanish 2 (Spain) or French 2 (France) with a grade of C or better prior to departure; they must also be enrolled in the next level of the sequence.**



WHY TRAVEL?

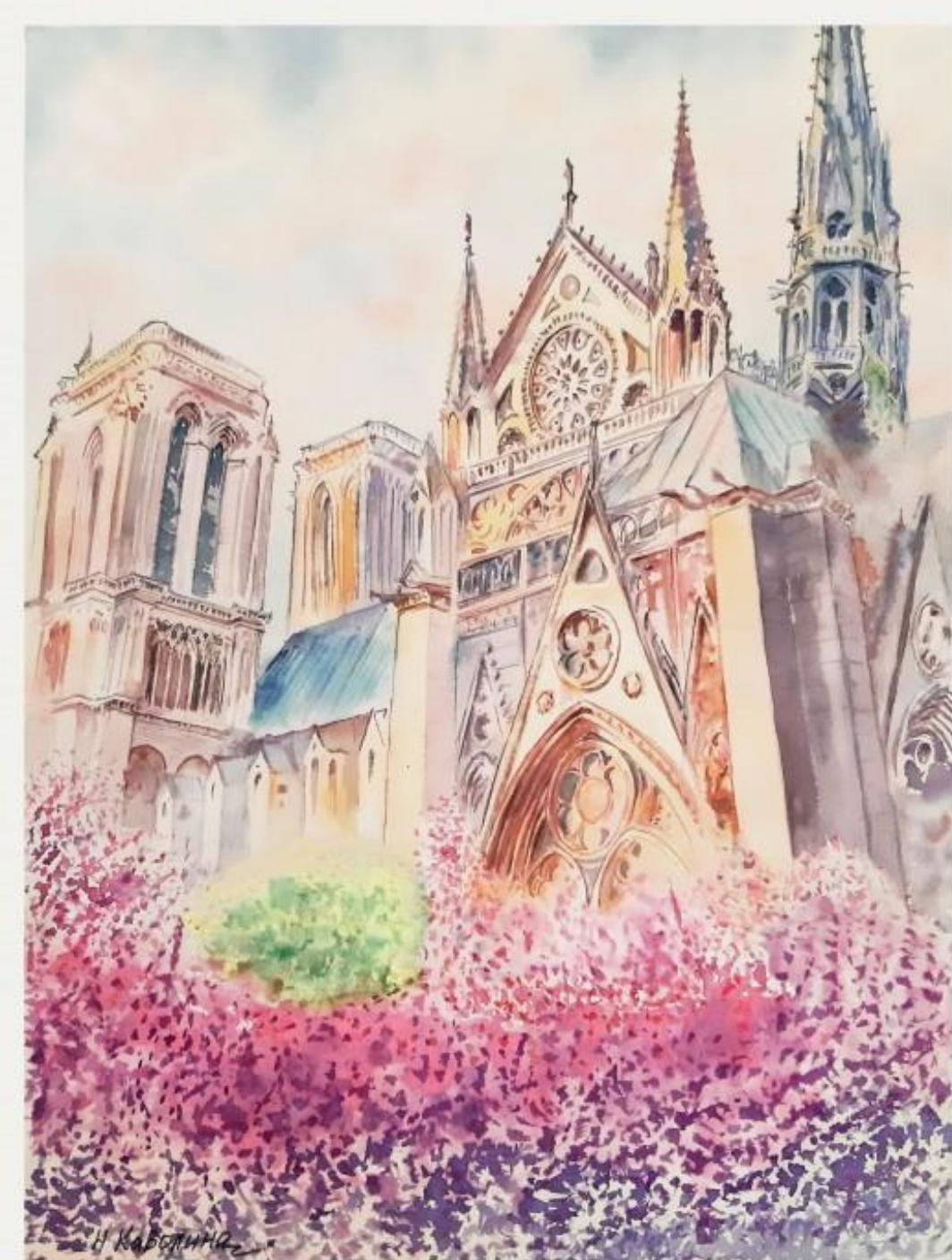
- Helps develop a global perspective
- Sparks a sense of confidence
- Prepares students to stand out on college applications and in future careers
- Allows students to APPLY what they have learned in the classroom
- Takes you out of your comfort zone



OUR TRAVEL PARTNER

The background is a watercolor illustration. The top half shows a castle with a tall spire and two towers, set against a light sky. The bottom half features a field of pink and purple flowers. The entire scene is rendered in soft, blended colors with visible brushstrokes.

travel & *education*



WHY T&E?

- First & foremost, an education company
 - This is a COURSE
 - Immersion based on French level
 - Residence Halls for college-like experience
- 98% satisfaction rate!
- A leader in educational travel.
- Incredible travel experiences at competitive prices.



SAFETY



24-HOUR
EMERGENCY SUPPORT

EMERGENCY U.S.
CONTACT

FULL-TIME,
ENGLISH-SPEAKING
COORDINATOR

PREVENTATIVE
MEASURES

CENTRAL BUCKS
CHAPERONES

MANDATORY MEDICAL & ACCIDENT INSURANCE

SAFETY IS A PRIORITY

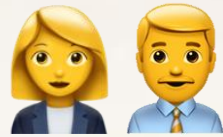
T&E's programs includes the following medical and safety benefits that are available to every student to make sure they feel secure and have immediate access to healthcare attention:

- *24-hour emergency service and contact numbers both in the US and Abroad.*
- *Dedicated T&E Staff and Program Coordinators who are on call 24/7 should any need of medical attention arise.*
- *Local Medical and Accident Insurance included in all of our programs.*
- *Mandatory Comprehensive Study Abroad Insurance offered through contracted group coverage. [Read More](#)*
- *Students Orientation that highlights safety-procedures as well as providing cultural training so each individual can be well prepared to avoid unwanted and unsafe situations.*
- *T&E offers accommodations with reputable families and residence halls with outstanding ratings all within 15 minutes walking distance from any T&E program activity.*
- *T&E has long standing agreements with the most reputable bus lines in the region with whom we contract private transfers to and from the airport and excursion locations.*
- *T&E provides informaton for an emergency evacuation should the need arise. For peace of mind, please refer to that plan, [at this link](#).*

WHAT IS INCLUDED IN PRICE



ROUND-TRIP AIRFARE



GUIDED TOURS



ON-TOUR TRANSPORTATION



2 DAILY MEALS



LODGING



DAILY IMMERSION LESSONS



FULL-TIME, BI-LINGUAL COORDINATOR



OFFICIAL CERTIFICATE



EDUCATIONAL ITINERARY



TOUR EXCURSION FEES

WHAT'S NOT INCLUDED

- SPENDING MONEY (\$30 - \$65 per day)
 - Free time activities
 - Souvenirs
 - Lunch, snacks, drinks
- CHARTER TO/FROM AIRPORT DEPARTURE & ARRIVAL
 - PRICE APPROX. \$50 - \$100
- TIPS
 - \$50 PER PERSON CASH
- INTERNATIONAL CALLING PLAN
- AIRPORT BAGGAGE FEES



PASSPORTS & VISAS

ALL TRAVELERS ARE RESPONSIBLE FOR SECURING NECESSARY DOCUMENTATION

PASSPORTS:

- Valid passports are required for all travelers
- Can take up to 14 weeks to process.
- Must be valid for at least 6 months **BEFORE & AFTER** our return date.

VISAS:

- Non-U.S. citizens may require special visas or other travel documents.



ENTRY REQUIREMENTS



AS OF AUGUST 1, 2022, THERE ARE NO REQUIREMENTS TO ENTER THE COUNTRY, **HOWEVER**, THE FRENCH GOVERNMENT RESERVES THE RIGHT TO REINSTATE ANY TRAVEL RESTRICTIONS AND/OR ENTRY REQUIREMENTS.

TRAVEL WINDOW (10-day program within this window)

JUNE 28



THESE DATES ARE
NOT SET IN STONE.



JULY 12



ITINERARY



US DEPARTURE

Late June / Early July

ARRIVE IN ROUEN

Day 1

ORIENTATION & CITY TOUR

Day 1

CLASSES & TOURS

Days 2 - 6

TRANSFER TO PARIS

Day 7

PARIS TOURS & ATTRACTIONS

Days 7 - 9

TRAVEL HOME TO U.S.

Day 10

ROUEN, FRANCE



- Northern France
- Capital of Normandy region
- Charming & safe
- Port city on the Seine River
- Approx. 2 hrs. from Paris
- Rich in culture
- Pedestrian Center



MONET & JEANNE D'ARC

Home of the cathedral that inspired a series of paintings by impressionist painter Claude Monet.

Home to the Jeanne d'Arc museum and place of her historic trial and execution.



PRICING DETAILS

BETWEEN \$4,500 - \$4,900

Flight, 2 daily meals, lodging, entrance fees, tours, excursions, classes, mandatory insurance

The number of students participating & flight cost will determine the FINAL cost

PAYMENT OPTIONS



1. Check or money order mailed to Travel & Education.
1055 Mill Creek Drive, Feasterville-Trevose, PA. 19053

Include student's name on memo line for reference

2. All major credit cards accepted via online payment gateway at www.travelandeducation.org under **APPLY**

A 3% handling fee applies



APPLY NOW



OUR DISTRICT

SCHOOL BOARD

TEACHING AND LEARNING

T

- Technology and Engineering Education

V

- Visual Arts

W

- World Languages



OUR DEPARTMENT



PROGRAM PLANNING



RECURSOS PARA HISPANOH



SEAL OF BILITERACY



FRANCE 2023

1. CBSD.ORG
2. TEACHING & LEARNING
3. WORLD LANGUAGES
4. FRANCE 2023

- ✓ Student Application Form
- ✓ Parent Approval Form
- ✓ 2 teacher recommendations

APPLY NOW



1. SUBMIT ALL FORMS BY FRIDAY, OCTOBER 14, 2022 (midnight)
2. APPLICATIONS WILL NOT BE ACCEPTED AFTER THIS DATE

NO EXCEPTIONS

WHO'S IN?!

You will find out if you
are accepted by

FRIDAY October 21, 2022.

